

# MONTHLY MEMBERSHIP PROGRESS REPORT

LOCATION KENYA AFRICA

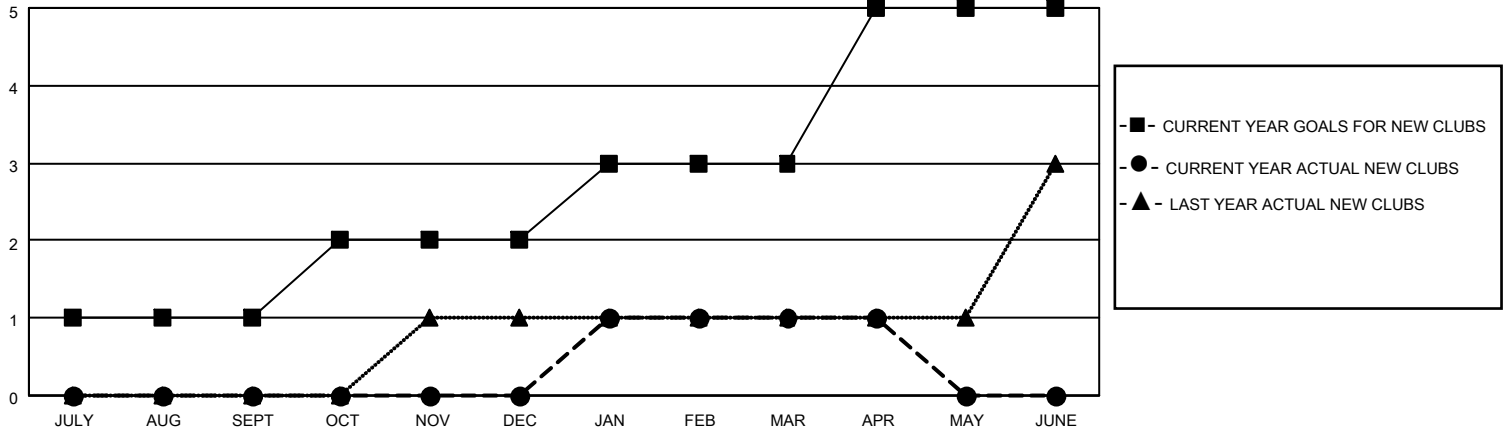
District 411 A

Results as of: 4/30/2023

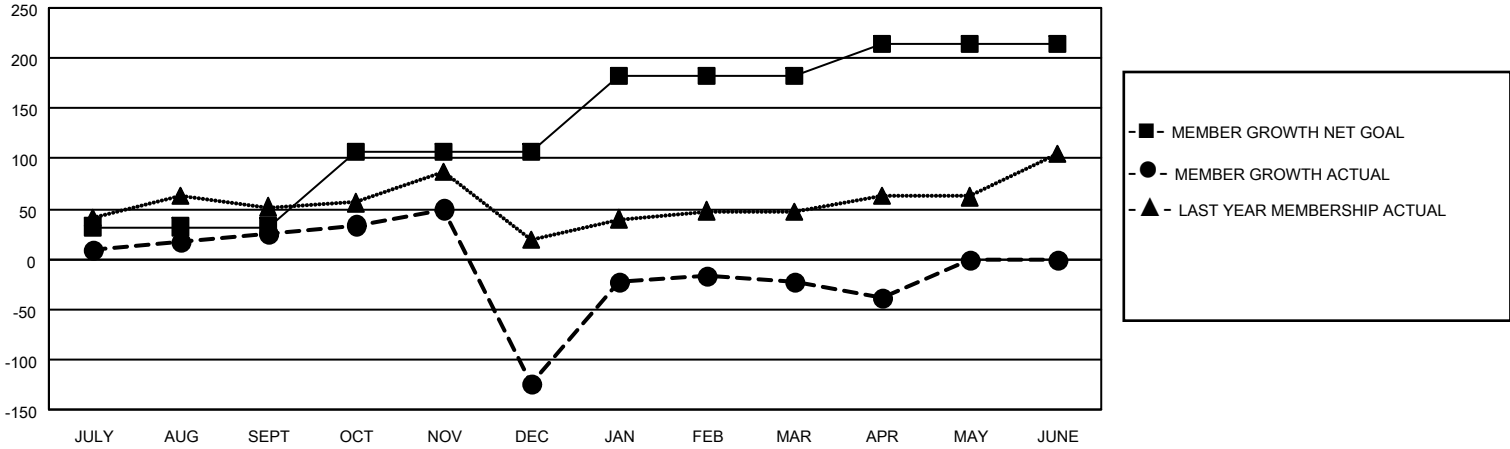
Clubs			
RESULTS FOR 2022-2023			
QUARTER	NEW CLUB GOAL	NEW CLUBS	DROPPED CLUBS
JULY/AUG/SEPT	1	0	1
OCT/NOV/DEC	1	0	6
JAN/FEB/MAR	1	1	0
APR/MAY/JUNE	2	0	0

Members			
RESULTS FOR 2022-2023			
QUARTER	MEMBER GROWTH NET GOAL	MEMBER GROWTH ACTUAL	DROPPED MEMBERS ACTUAL (including transfers)
JULY/AUG/SEPT	32	47	20
OCT/NOV/DEC	75	43	192
JAN/FEB/MAR	75	171	37
APR/MAY/JUNE	32	7	22

**GOALS AND ACTUAL NEW CLUBS CUMULATIVE**



**GOALS AND ACTUAL MEMBERS CUMULATIVE**



<b>DROPPED CLUBS: 7</b>	
<b>DROPPED MEMBERS</b>	
DECEASED	5
CLUB CANCELLED	121
OTHER	145
<b>TOTAL</b>	<b>271</b>

38 CLUBS OF 68 ADDED 1 OR MORE NEW MEMBERS

[CLICK HERE FOR CUMULATIVE MEMBERSHIP DATA](#)

<u>GENDER DISTRIBUTION</u>	
MALE	1,001 (59.94%)
FEMALE	668 (40.00%)
NON BINARY	0 (0.00%)
PREFER NOT TO ANSWER	1 (0.06%)
<b>TOTAL FAMILY UNIT MEMBERS</b>	<b>405</b>
<b>FAMILY MEMBERS PAYING HALF DUES</b>	<b>222</b>